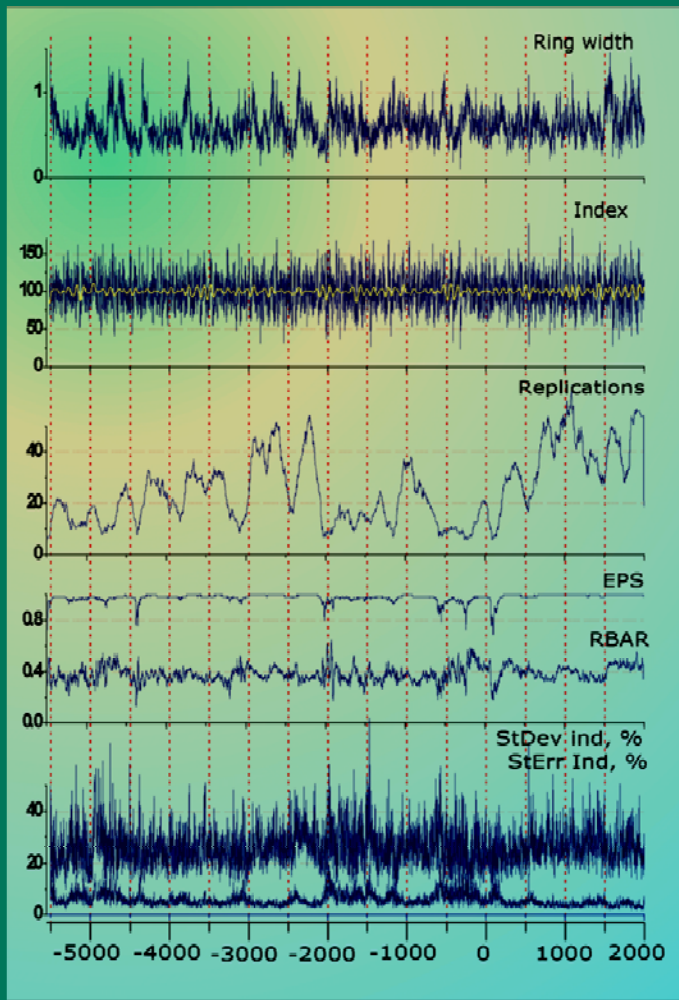


The 7642-yr tree-ring chronology for Finnish Lapland



Some notes about the supralong tree-ring chronology for Finnish Lapland:

- Average ring-width: 0.6 mm
- Scale for tree-ring indices: 50-150.
- Minimum and maximum indices suggest to cooler and warmer summers.
- Replications per year 8 - 60.
- RBAR (21 years): o the average $r = 0.4$
- The EPS value is less than 0.85 in some parts of the chronology